

PERFORMANCE

- Processor**
Intel® Core™ i5-10400T (6C / 12T, 2.0 / 3.6GHz, 12MB)
- Graphics**
Integrated Intel UHD Graphics 630
- Chipset**
Intel H470 Chipset
- Memory**
1x 8GB SO-DIMM DDR4-2666
- Memory Slots**
Two DDR4 SO-DIMM slots, dual-channel capable
- Max Memory**
Up to 64GB DDR4-2933
- Storage**
1x 256GB SSD M.2 2280 PCIe NVMe Opal
- Optane™ Memory**
None

- Storage Support**
Up to two drives, 1x 2.5" HDD + 1x M.2 2242/2280 SSD
- 2.5" HDD up to 1TB
 - M.2 SSD up to 2TB
 - Optional Intel Optane Memory, M.2

- Card Reader**
Not configured

- Optical**
None

- Audio Chip**
High Definition (HD) Audio, Realtek® ALC233VB codec

- Speakers**
1.5Wx1

- Power Supply**
65W 89% Adapter

DESIGN

- Keyboard**
USB Traditional Keyboard, Black, Portuguese (BR)

- Mouse**
USB Calliope Mouse, Black

- Expansion Slots**
Two M.2 slots (one for WLAN, one for SSD)

- Case Color**
Black

- Stand**
None

- Adapter Cage**
None
- Toolless Chassis Screw**
Toolless Chassis Screw
- Dust Filter**
None
- VESA Mount**
None
- Form Factor**
Tiny (1L)
- Dimensions (WxDxH)**

Models	Dimensions
Tiny only	179 x 183 x 34.5 / 37 mm with rubber feet (7.05 x 7.2 x 1.36 / 1.5 inches with rubber feet)
With VESA mount & ODD box	187 x 183.8 x 66.5 mm (7.36 x 7.24 x 2.62 inches)

Weight

Models	Weight
Tiny only	1.25 kg (2.76 lbs)
With VESA mount & ODD box	1.74 kg (3.84 lbs)

CONNECTIVITY

- Ethernet**
Integrated 100/1000M

- WLAN + Bluetooth™**
Intel AX201 11ax, 2x2 + BT5.1

- Front Ports**
- 1x USB 3.2 Gen 2 (Always On and fast charge)
 - 1x USB-C 3.2 Gen 1
 - 1x headphone / microphone combo jack (3.5mm)

- Physical Locks**
Kensington® Security Slot
- Kensington Cable Lock**
None
- Chassis Intrusion Switch**
Chassis Intrusion Switch

MANAGEABILITY

- System Management**
None

SERVICE

- Base Warranty**
1-year, Onsite
- Included Upgrade**
None

CERTIFICATIONS

- Green Certifications**
- EPEAT™ Gold
 - ENERGY STAR® 8.0
 - ErP Lot 3
 - TCO Certified 8.0
 - RoHS

- Mil-Spec Test**
MIL-STD-810H military test passed (Low Pressure [Altitude], High Temperature, Low Temperature, Temperature Shock, Humidity, Sand and Dust, Vibration, Shock, Fungus, Solar Radiation)

SOFTWARE

- Operating System**
Windows® 10 Pro 64, Portuguese (Brazil)

- Bundled Software**
None

MODEL

TopSeller	: Yes	Announce Date	: 2020-06-23
EAN / UPC / JAN	: 195235391624	End of Support	: 2026-11-30

Optional Front Ports

None

Rear Ports

- 3x USB 3.2 Gen 1
- 1x USB 3.2 Gen 2
- 1x Ethernet (RJ-45)
- 1x HDMI®
- 1x DisplayPort™

Optional Rear Ports

1x VGA

Monitor Cable

None

SECURITY & PRIVACY

Security Chip

Discrete TPM 2.0, TCG certified

Fingerprint Reader

Not configured

The product image is a sample, it may not match the real color of this model

For a full list of this model's configurations and device specifications, please visit: <https://psref.Lenovo.com>

Premier Support - A direct 24x7x365 line to our most elite technicians.



Advanced technical support, 24x7x365, in more than 100 markets



Technical Account Managers for proactive relationship and escalation management



Comprehensive hardware & OEM software support



Priority on service delivery and repair parts



Single point of contact for simplified end-to-end case management



Lenovo Service Connect Portal for customized reporting and product support

Accidental Damage Protection - Protection of your PC from the unexpected.

Experience shows that a significant portion of devices may be damaged (and not covered under warranty) in the first three years. Lenovo's Accidental Damage Protection service covers accidents beyond the system warranty such as drops, spills, bumps and even electrical surges. Make sure your new device has maximum protection, avoid unplanned costs and get peace of mind.

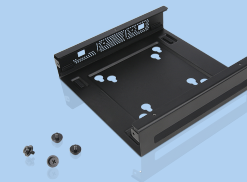
Base Warranty - Included with the systems you purchase, default 1- or 3-year coverage window.

Warranty Extensions & Upgrades - Service and protection that's right for your circumstances.

- Pick Up & Return Courier
- Onsite Support
- Technician Installed Customer
- Replaceable Unit Service
- International Warranty Upgrade

Lenovo may not offer the products, services or features discussed in this document in all regions. Lenovo may withdraw an offering at any time. Information is subject to change without notice. Consult your local representative for information on offerings available in your area. Lenovo reserves the right to change specifications or other product information without notice. Lenovo is not responsible for photographic or typographical errors. Lenovo provides this publication "as is" without warranty of any kind, either express or implied, including the implied warranties of merchantability or fitness for a particular purpose.

Recommended Accessories



ThinkCentre Tiny VESA Mount II

4XFON03161

The ThinkCentre Tiny VESA Mount II is a unique design specific to house the Tiny PC while featuring the universal VESA mount configuration. The VESA standard enables this mount to attach to anything that is VESA comp...



Lenovo Powered USB-C Travel Hub

4X90S92381

Travel-Ready Productivity Powerhouse; One-stop travel docking is finally here. Connect and charge new and legacy devices wherever you happen to be. Sleek and compact, the Lenovo Powered USB-C Travel Hub fits unlimited...

For a full list of accessories and services, please visit:
<https://smartfind.Lenovo.com>

Lenovo

PSREF
Product Specifications
Reference